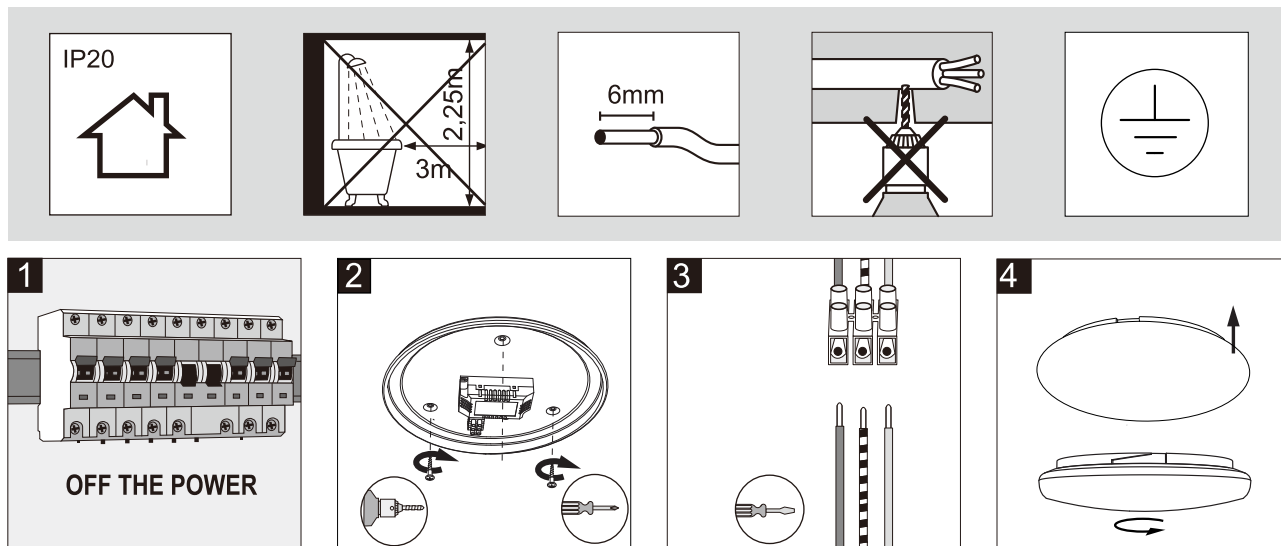


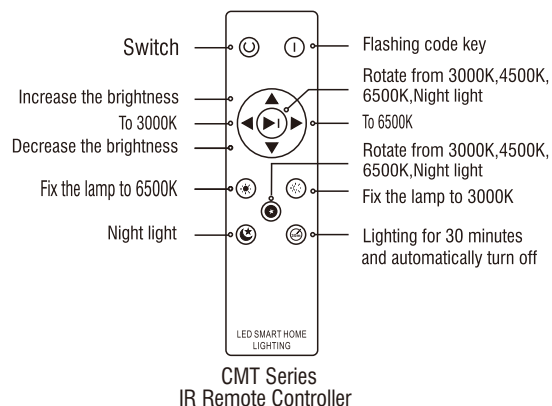


Ceiling Mounted Light Series Installation Manual

WiFi(tuya) CMT Smart Series



Controller Instructions

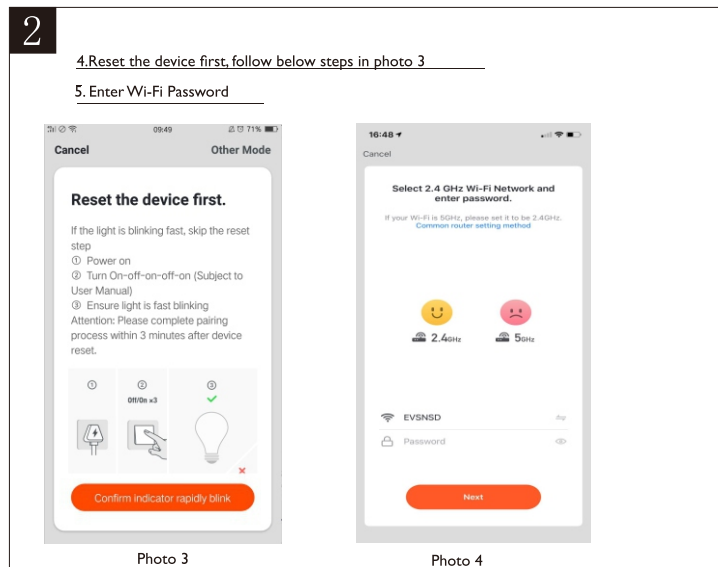
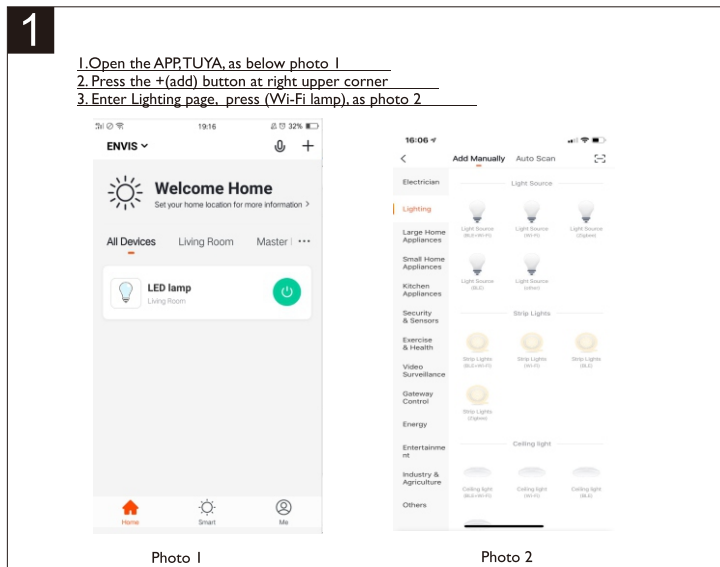


Instructions for Phone APP

- Scan the QR code to download the APP.
- Sign in the APP with your account & password.
- Connect the lamp with WIFI.
- Enjoy the remote control any time any where.



For first time usage, how to add equipment? Pls follow below steps:



3

6.Connecting process until 100%, as photo 5

7.Device added successfully.We can name this device,add to different group etc as photo 6

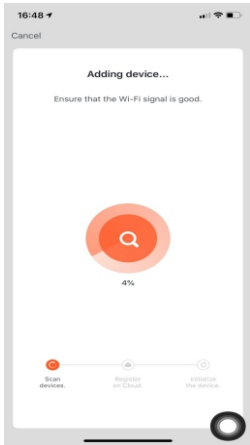


Photo 5

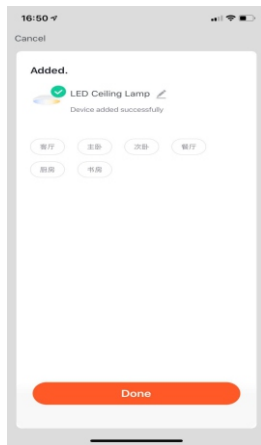


Photo 6

4

8.Enjoy the free control of the lamp, dimming, changing color, scene mode etc



Photo 7

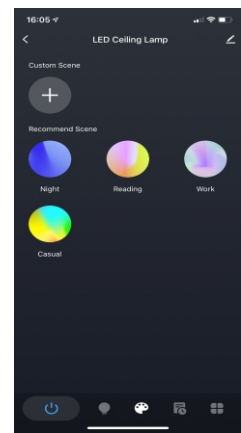


Photo 8

5

9. Plan and Schedule

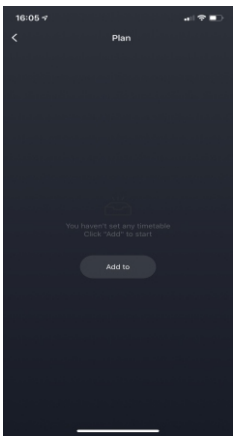


Photo 9

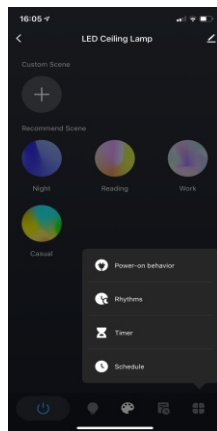


Photo 10



IMPORTANT SAFETY INSTRUCTIONS

CMT Series for indoor use only. If the external flexible cable or cord of this luminary is damaged, it shall be exclusively replaced by the manufacturer or his service agent or a similar qualified person in order to avoid a hazard. If you are uncertain, please contact us.

Always shut off power to the circuit before starting installation work. In some countries electrical installation work may only be carried out by an authorised electrical contractor. Contact your local electricity authority for advice.

Caution!

Keep these instructions for future use.

Important information!

The light source of this product is non-changeable light diodes (LED).Do not disassemble the product, as the light diodes can cause damage to the eyes.