

Technical Data for Alkaline Dry Battery

Type: LR03
(Made in China)

2013/07/01

TOSHIBA HOME APPLIANCES CORPORATION
Battery Business Div.

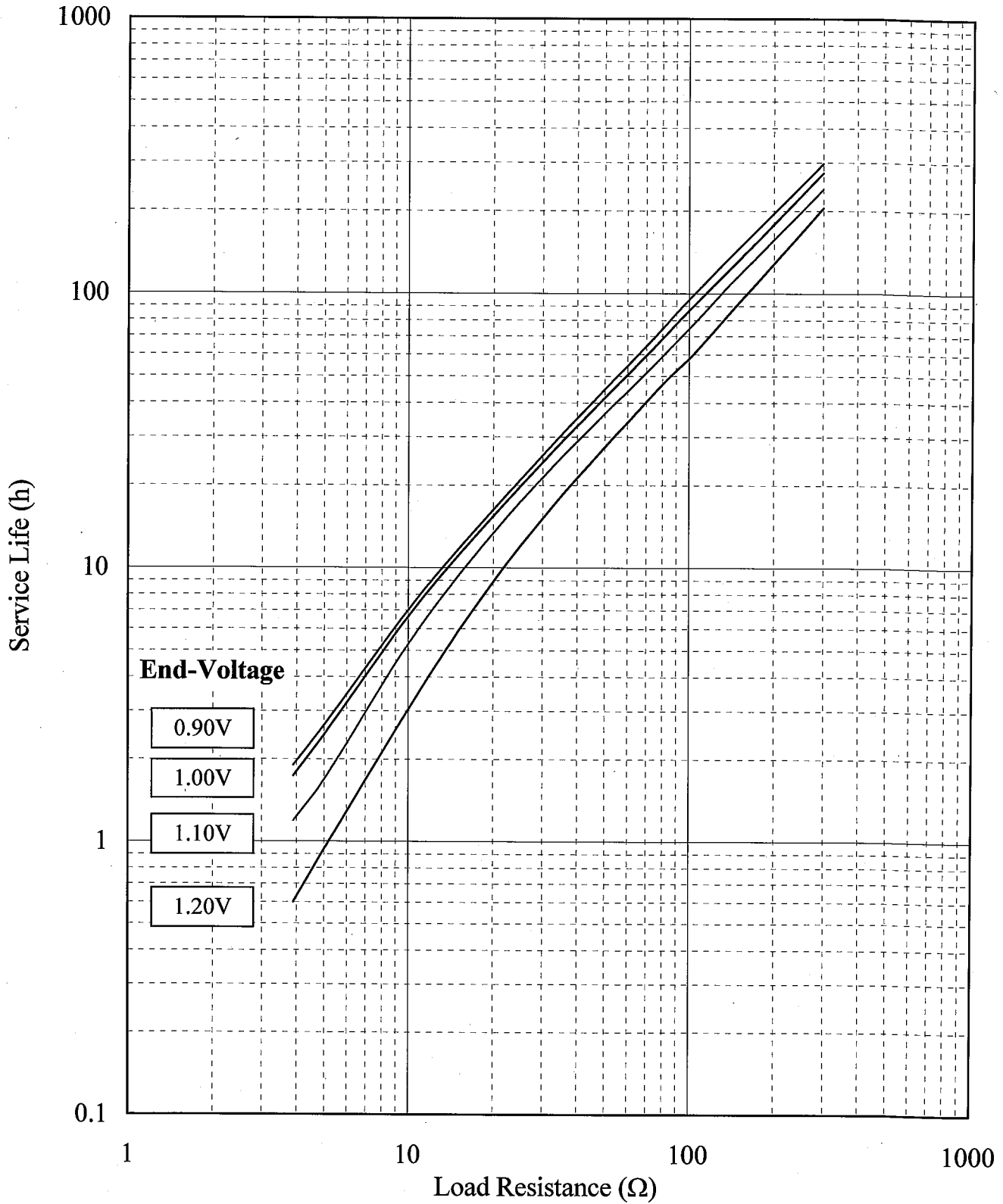
Ratings

Battery System		Alkaline Dry Battery	
Item			
Battery Type	LR03		
Nominal Voltage	1.5V		
Standard Discharge Performance ※Initial	Discharge Condition (JIS/IEC)		Service Life
	(1) 5.1Ω (4min/1h)-8h/day (End-Voltage:0.9V)		: 245 min.
	(2) 10Ω 1h/day (End-Voltage:0.9V)		: 8.2 hours.
	(3) 24Ω (15s/min)-4h/day (End-Voltage:0.9V)		: 20.5 hours.
	(4)75Ω 4h/day (End-Voltage:0.9V)		: 72 hours.
Standard Weight		11.3 g	
Terminals	Cap Terminals	Fe + Ni plate	
	Base Terminals	Fe + Ni plate	
Outer Dimensions	Overall Height	44.5(0/-1.2)mm	
	Diameter	φ10.5(0/-1.0)mm	
Usable Temperature Range		-10 ~ 45deg.C (If the operating temperature exceeds 40°C,the operating time shall be within 30 days.)	

(NOTE) *: " Initial" means performance within three months after production.

LR03 Load Resistance vs Service Life

Test Condition : Continuous Discharge, Initial, 20 deg.C

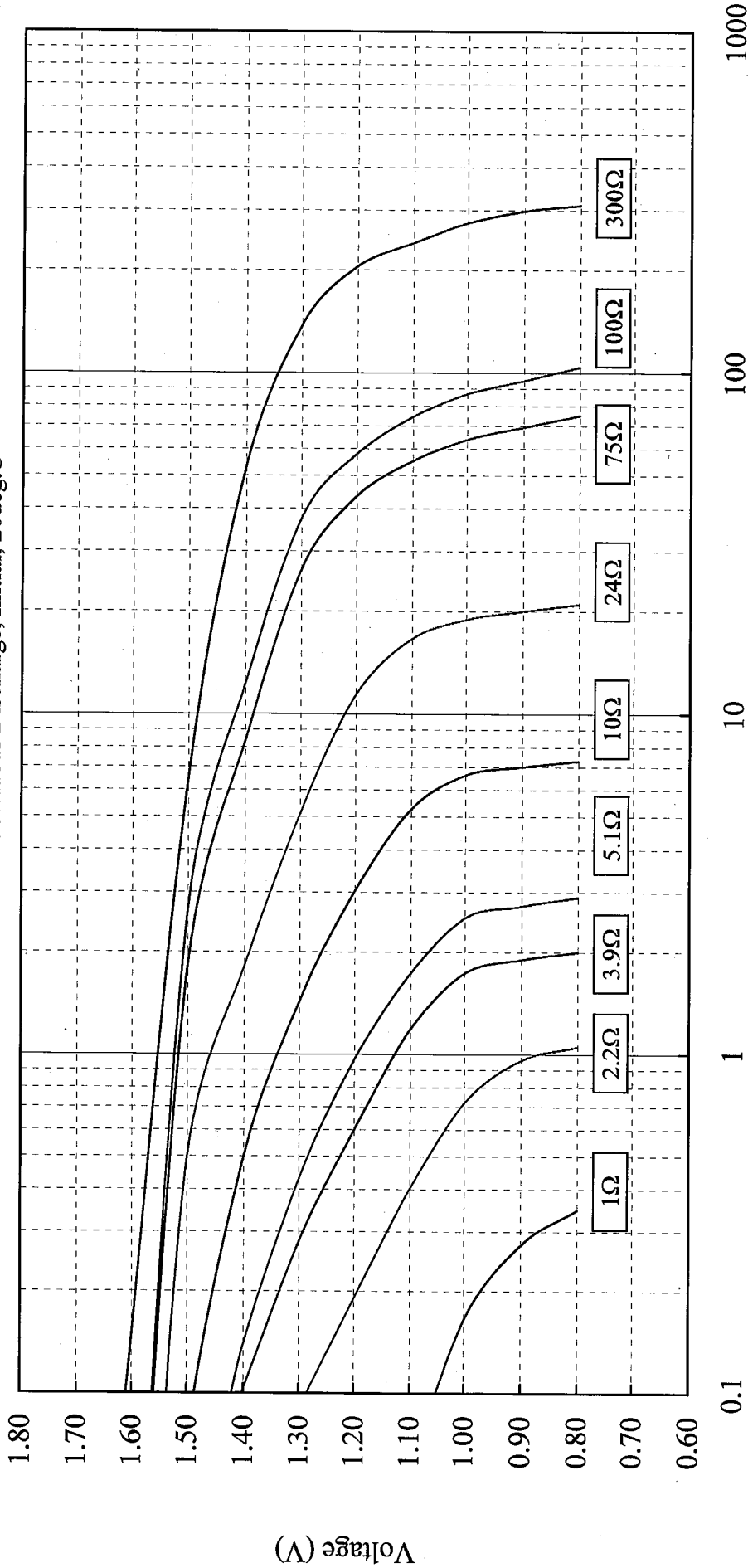


This is only for reference. (not guaranteed.) The information contained herein may be changed without prior notice.

Proprietary materials of TOSHIBA HOME APPLIANCES CORPORATION

LR03 Discharge Characteristics

Test Condition : Cotinuous Discharge, Initial, 20deg.C



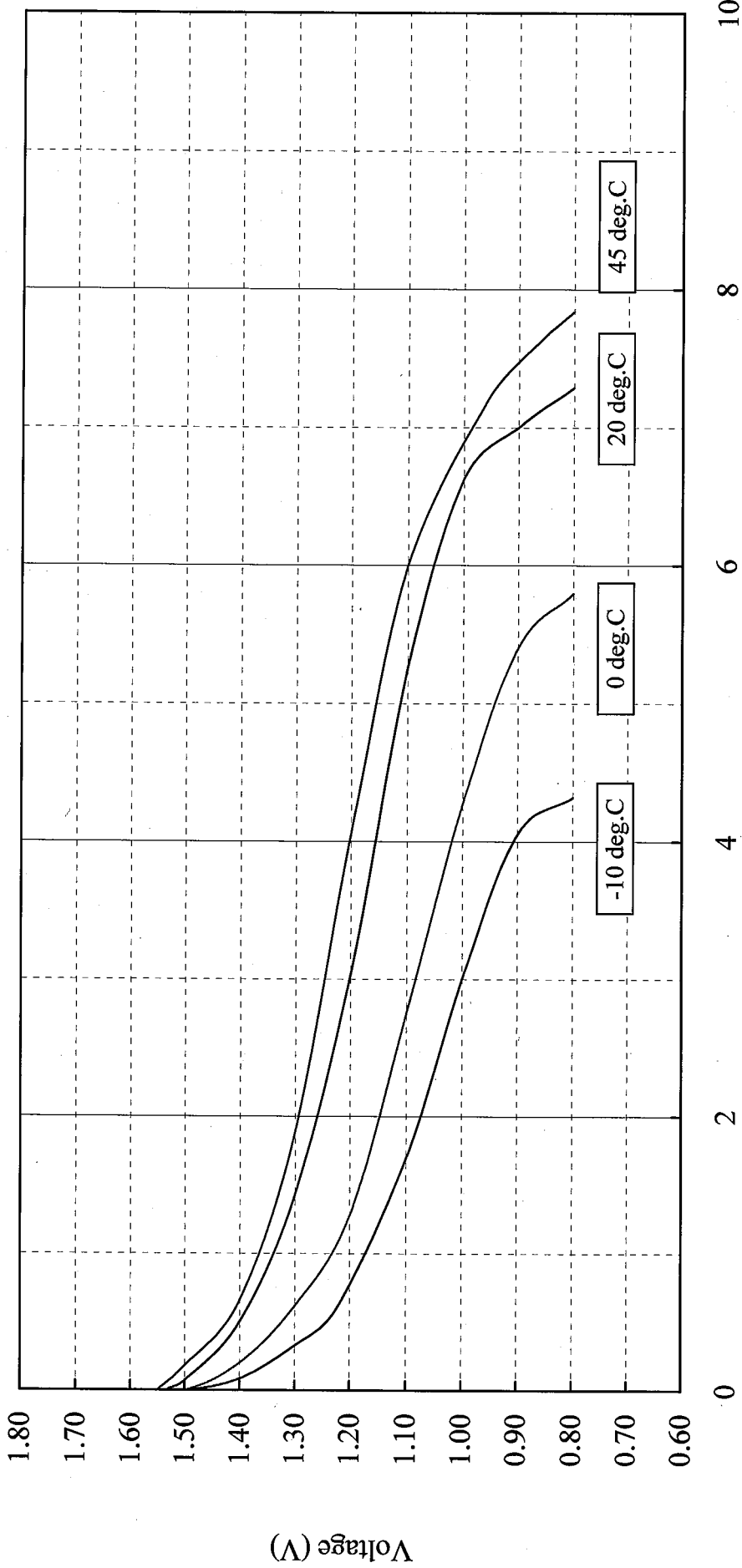
Service Life (h)

This is only for reference. (not guaranteed.) The information contained herein may be changed without prior notice.

Proprietary materials of TOSHIBA HOME APPLIANCES CORPORATION

LR03 Discharge Characteristics

Test Condition: 10Ω Continuous Discharge, Initial

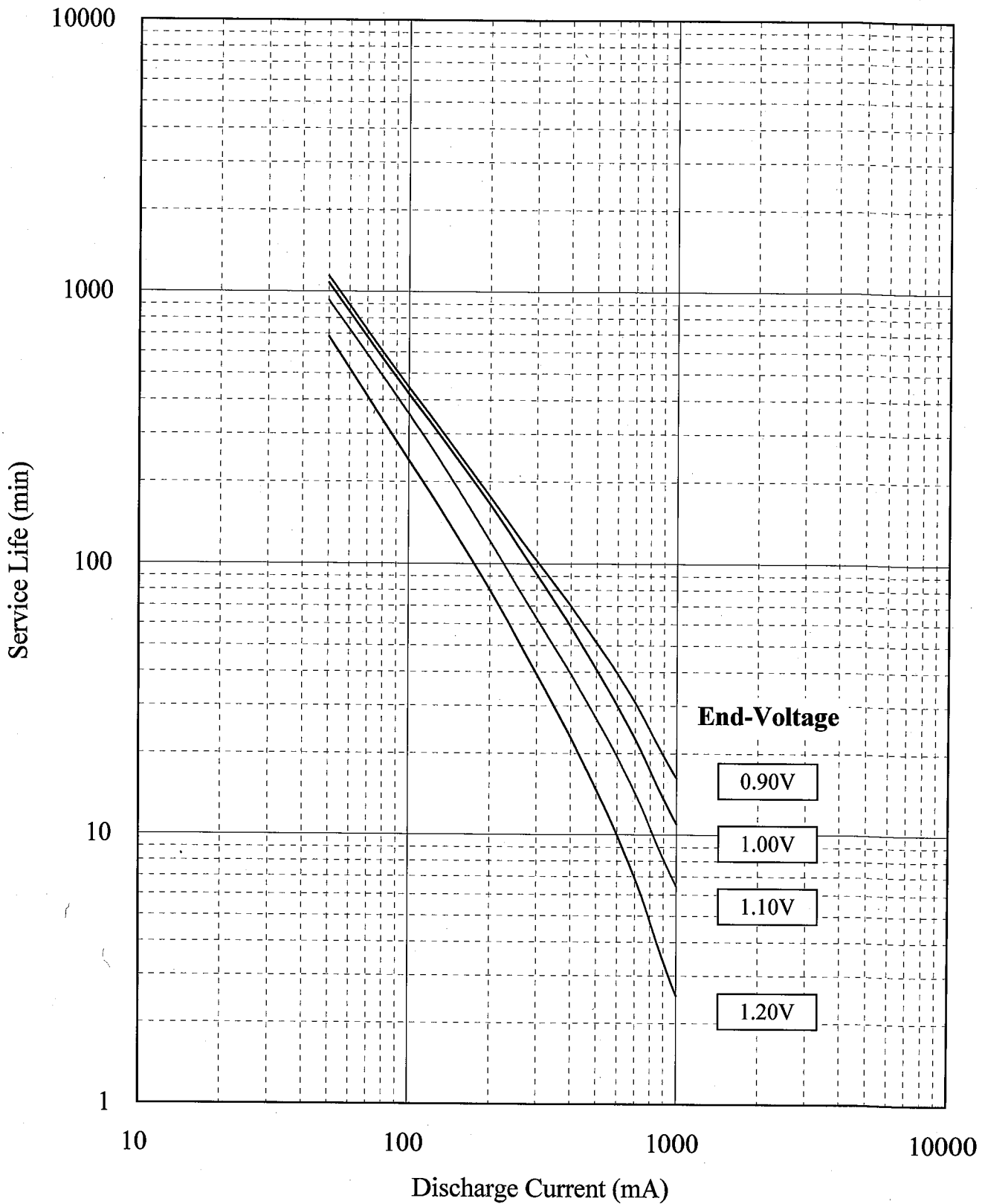


This is only for reference. (not guaranteed.) The information contained herein may be changed without prior notice.

Proprietary materials of TOSHIBA HOME APPLIANCES CORPORATION

LR03 Discharge Current vs Service Life

Test Condition : Cotinuous Discharge, Initial, 20 deg.C

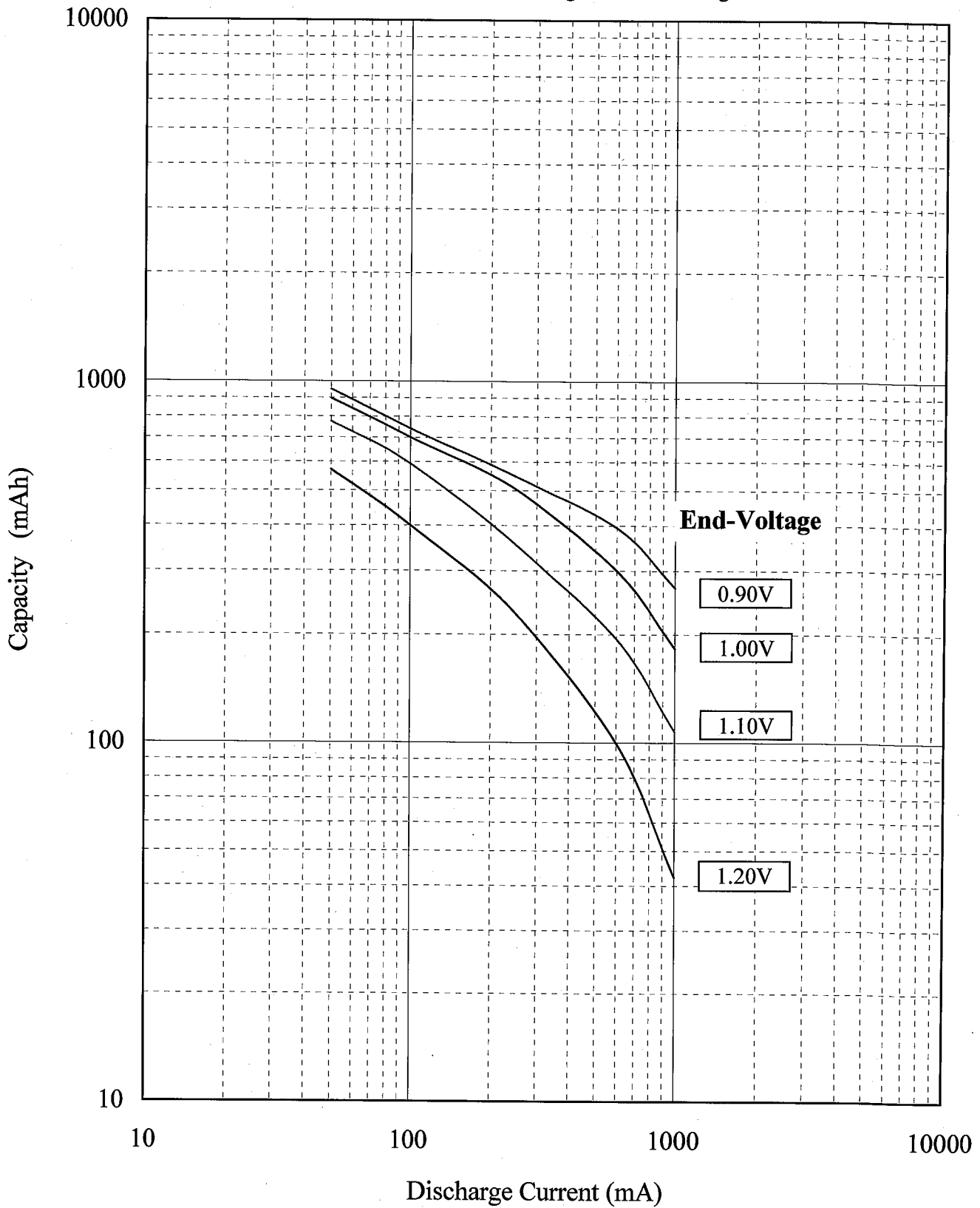


This is only for reference. (not guaranteed.) The information contained herein may be changed without prior notice.

Proprietary materials of TOSHIBA HOME APPLIANCES CORPORATION

LR03 Discharge Current vs Capacity

Test Condition : Cotinuous Discharge, Initial, 20 deg.C

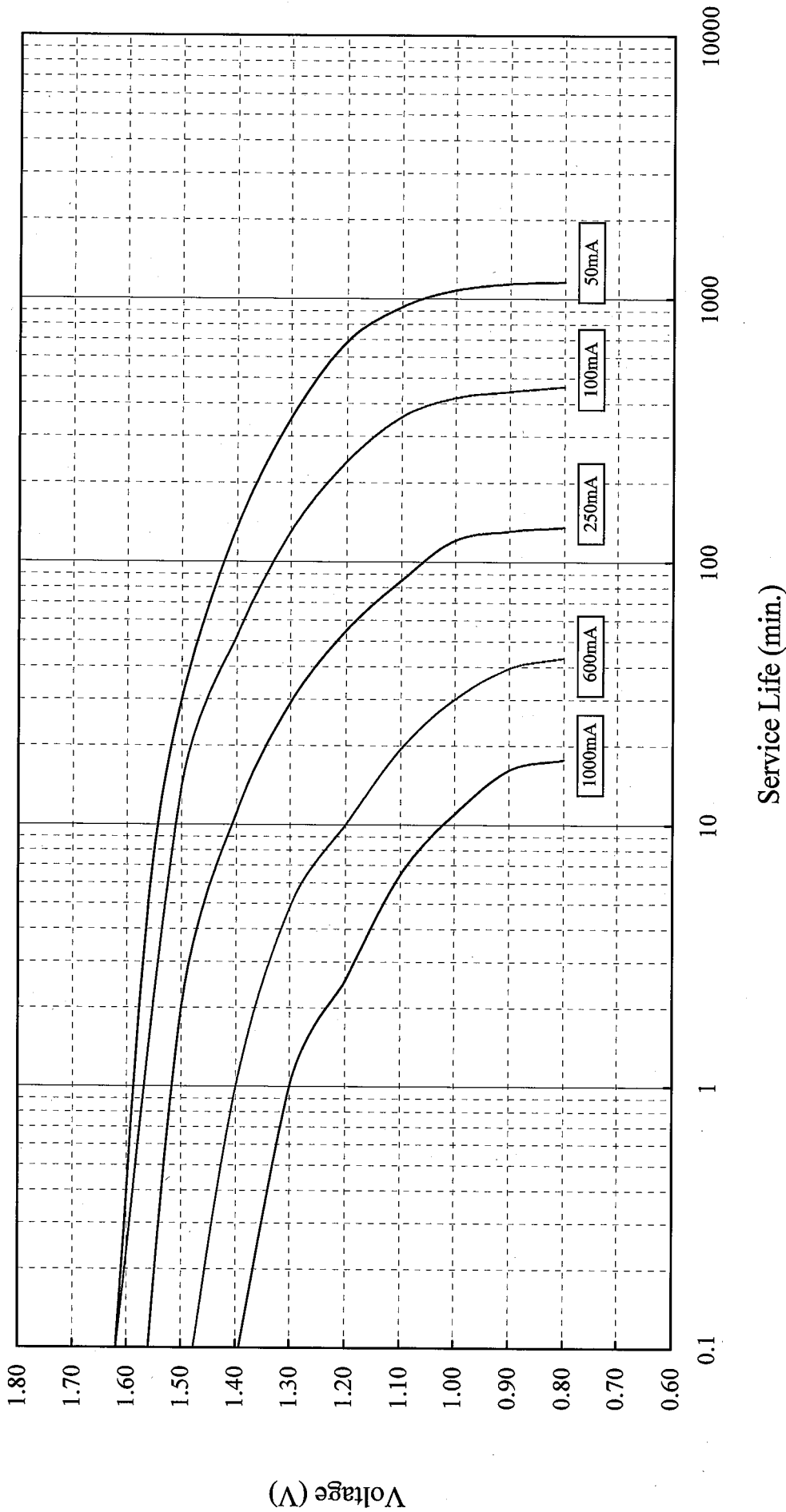


This is only for reference. (not guaranteed.) The information contained herein may be changed without prior notice.

Proprietary materials of TOSHIBA HOME APPLIANCES CORPORATION

LR03 Discharge Characteristics

Test Condition: Continuous Discharge, Initial, 20deg.C

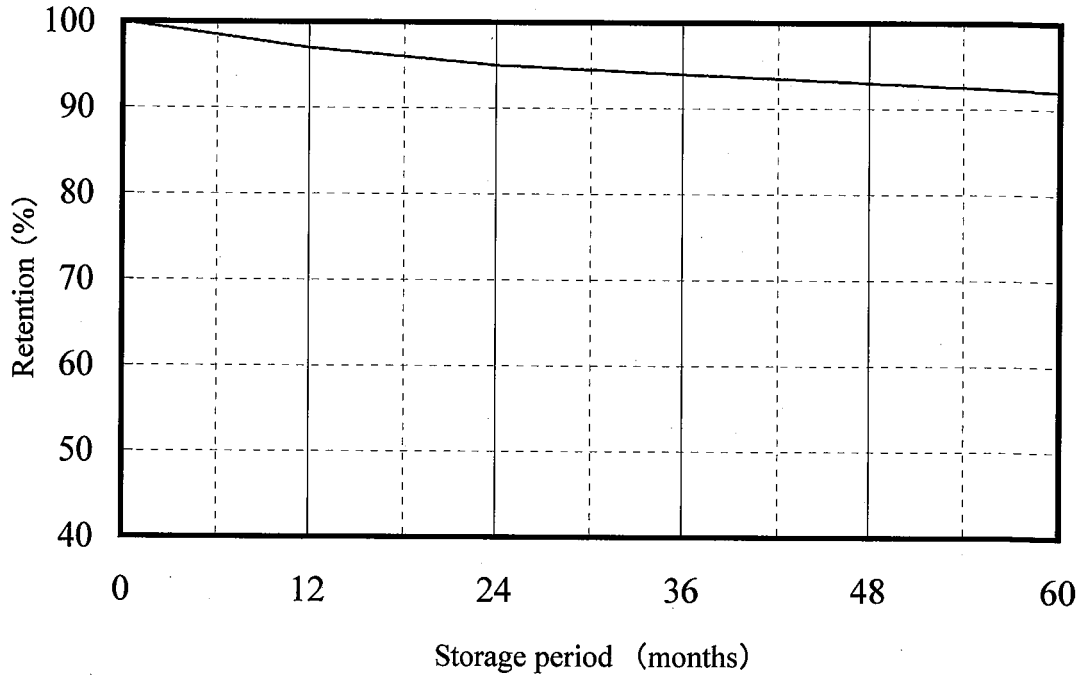


This is only for reference. (not guaranteed.) The information contained herein may be changed without prior notice.

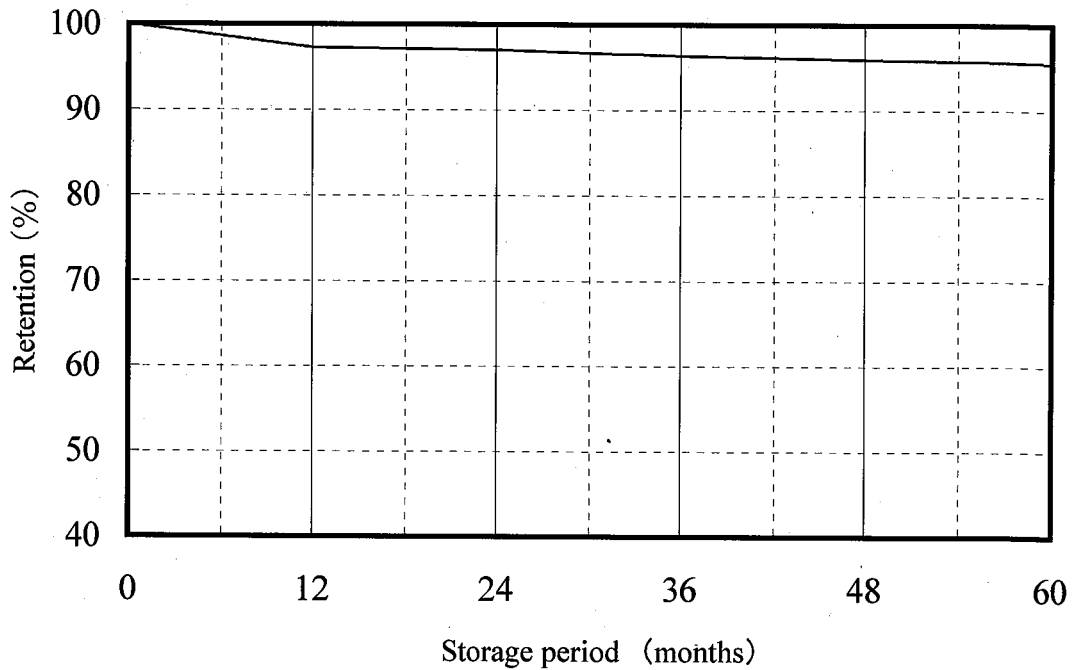
Proprietary materials of TOSHIBA HOME APPLIANCES CORPORATION

LR03 Storage Characteristics

[①Discharge Condition: 10 Ω 1h/day End-Voltage 0.9V]



[②Discharge Condition: 75 Ω 4h/day End-Voltage 0.9V]

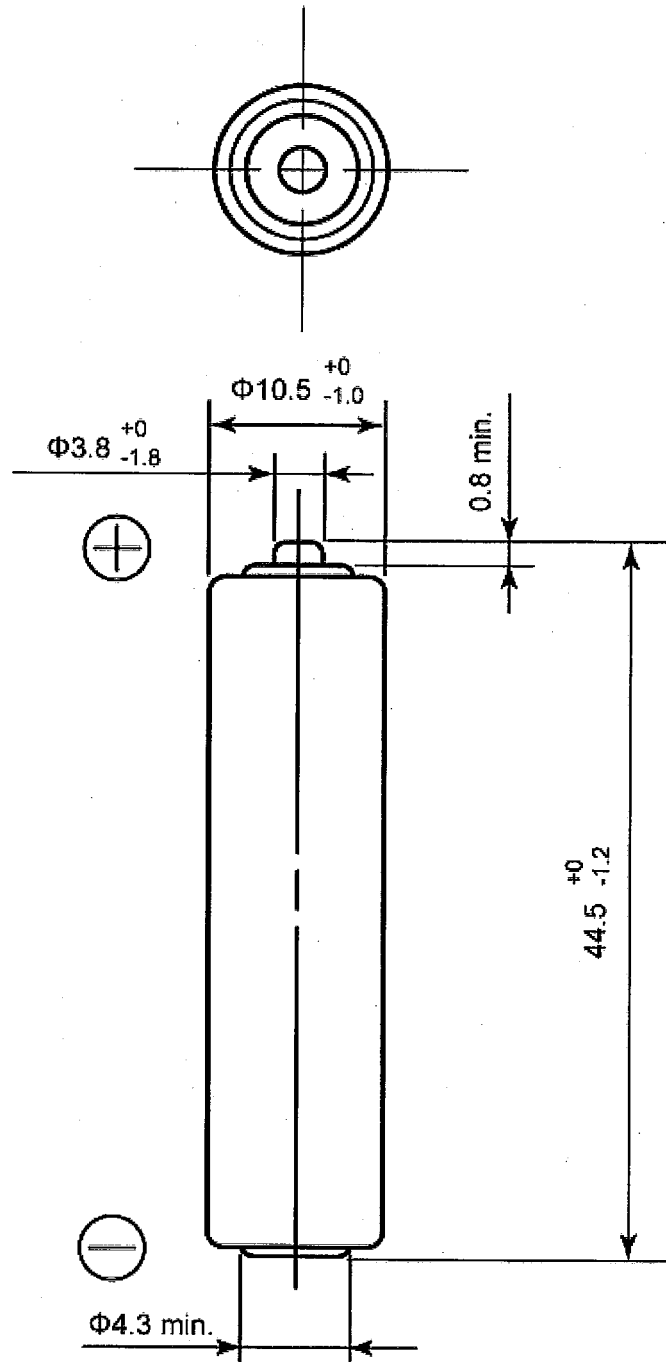


- [Note]
1. Discharge temperature, relative humidity: 20±2°C, (60±15)%RH
 2. Storage temperature, relative humidity: 20±2°C, (60±15)%RH
 3. Retention: Self-discharge rate

LR03 Leakage Performance

Test Items		Electrolyte Leakage (%)									
		20days	40days	60days	90days	1year	2year	5years			
Test Condition	Storage Period										
	Room Temperature	0	0	0	0	0	0	0	0	0	0
	Storage at High Temperature and High Humidity	0	0	0	0	0	0	0	-	-	-
	45deg.C-70%RH	0	0	0	0	0	0	0	-	-	-
	60deg.C-90%RH	0	0	0	0	0	0	0	-	-	-

LR03 Battery Dimensions



Unit: mm
Terminals: Positive-cap terminal
 Negative-base terminal
Outer Shell: Shrink-Label